

[www.metauniversemeu.com](http://www.metauniversemeu.com)



# META UNIVERSE (MEU)

Official Whitepaper

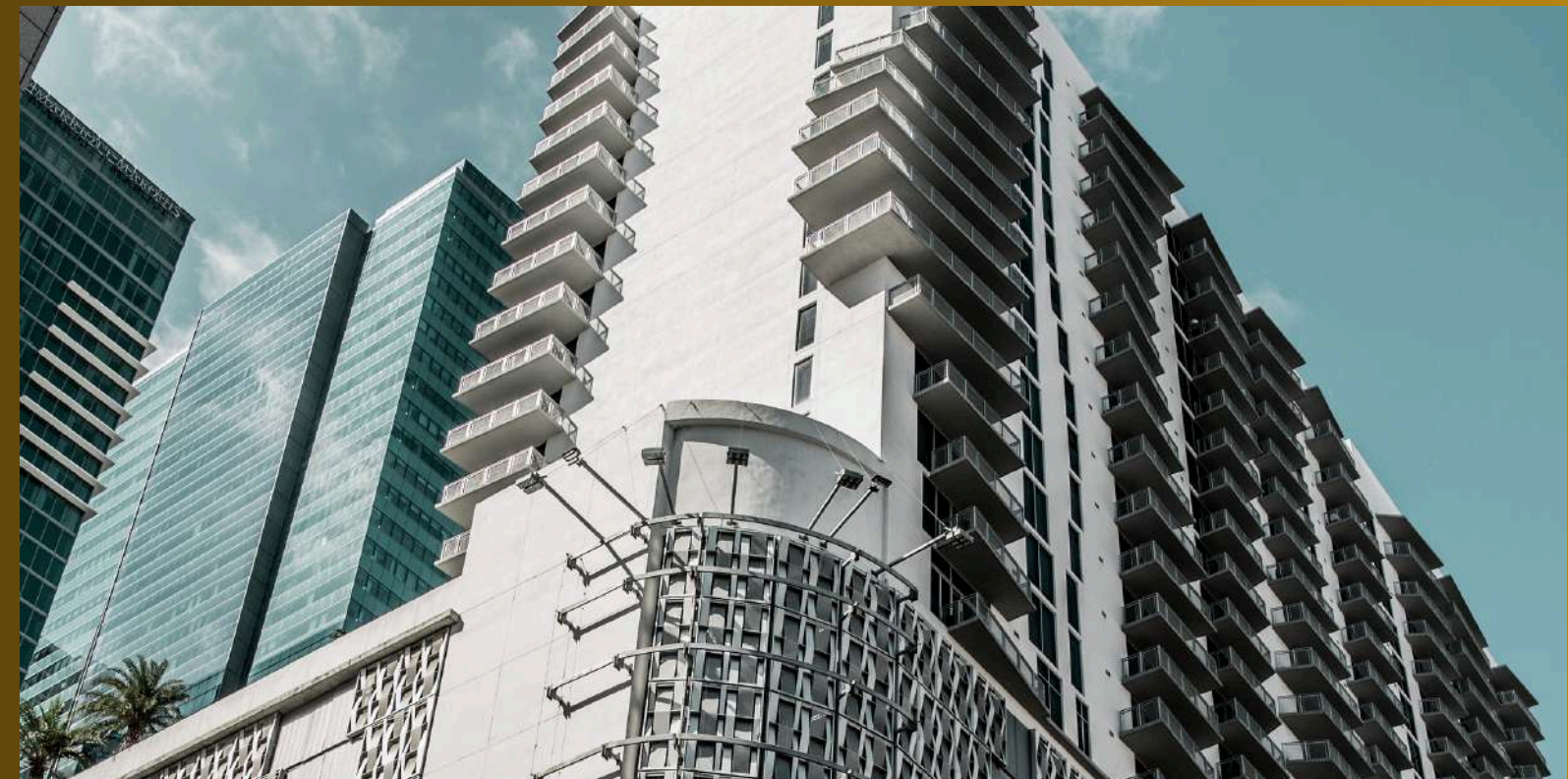
ERC-20 Token on Ethereum

Version 2 – 2026

A digital asset for emerging  
Web3 ecosystems.

# Problem Statement

The Web3 ecosystem remains fragmented and lacks practical integration with real-world applications.



01

## Fragmented Platforms

Digital assets, gaming, and payment systems operate separately, limiting real adoption.

02

## Limited Real-World Utility

Most tokens lack practical use cases beyond trading, restricting long-term value.

# Our Solution

01

## Unified Digital Ecosystem

MEU connects digital assets, gaming, and real-world payments into a single integrated infrastructure.

02

## Real-World Utility

MEU enables practical use cases, including payments, digital transactions, and future integration with gaming environments.



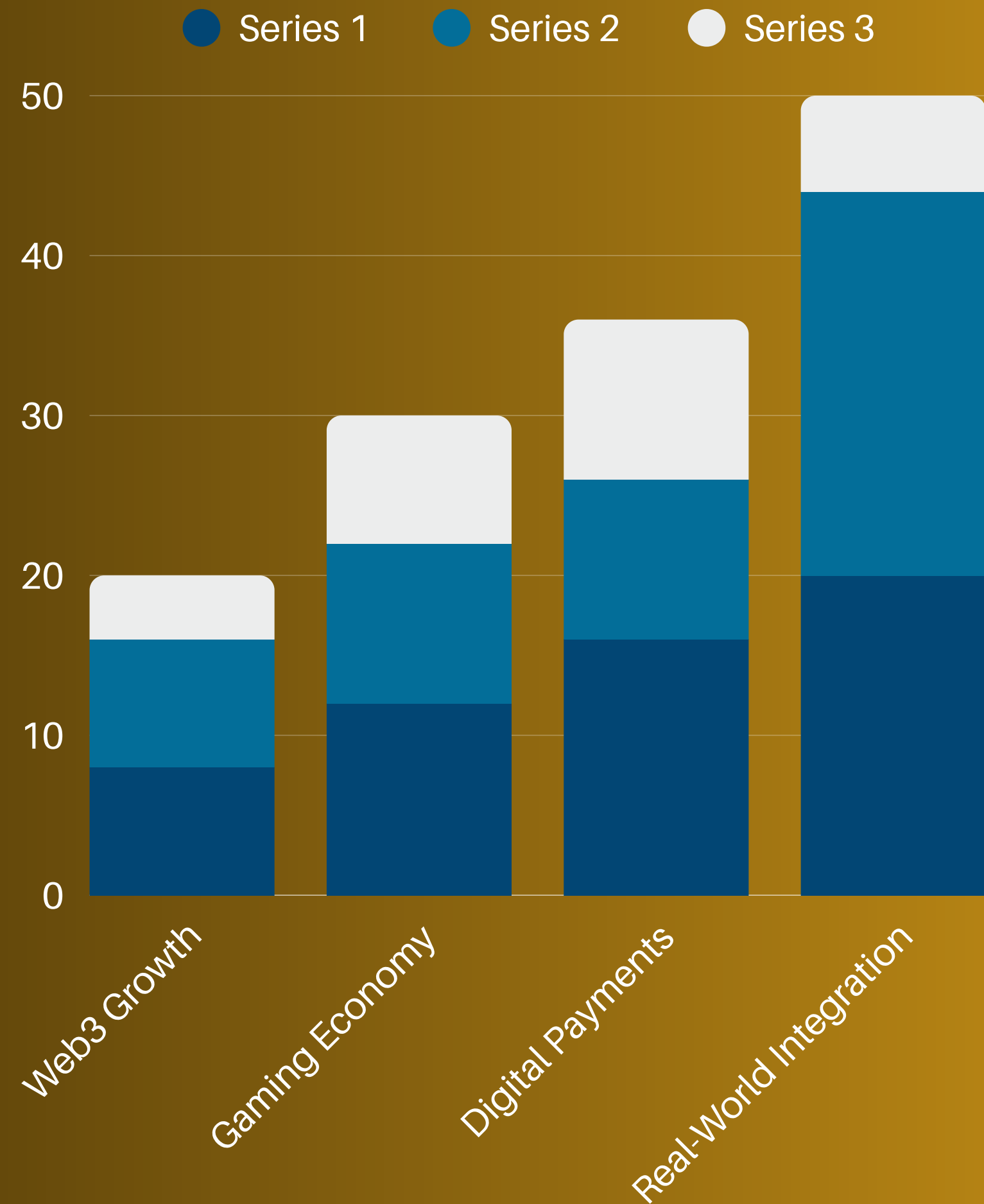
Meta Universe (MEU) is designed as a scalable digital asset that bridges blockchain technology with real-world applications, focusing on usability, adoption, and long-term ecosystem growth.

# Market Opportunity

## Global Digital Economy Growth

The global digital economy is rapidly expanding, driven by blockchain adoption, online payments, and digital asset integration.

Meta Universe (MEU) is positioned to capture value within this growth by connecting digital ecosystems with real-world utility.



# Business Model

Meta Universe (MEU) operates as a utility-driven digital asset within an integrated ecosystem.

The project generates value through transaction activity, platform integrations, and future digital services connected to gaming and real-world applications.

The focus is on sustainable growth, user adoption, and scalable infrastructure.



## Revenue Streams

Transaction fees, ecosystem partnerships, and future platform-based services.



## Pricing Strategy

Market-driven pricing through decentralized exchanges with liquidity-based valuation.



## Customer Retention

User engagement through utility, ecosystem expansion, and continuous platform development.

# Competitive Analysis



01

## Integrated Ecosystem

MEU connects gaming, digital assets, and real-world payments into one unified infrastructure.

02

## Real Utility Focus

Unlike many tokens, MEU is designed for real use cases, not speculation.

03

## Scalable Vision

Built to expand into gaming platforms, digital economies, and future integrations.

04

## Early Position Advantage

MEU enters the market at an early stage with high growth potential as adoption increases.



# Ecosystem Growth Strategy

Meta Universe (MEU) growth strategy is execution-focused, prioritizing real adoption through controlled expansion and practical implementation.

The project advances step-by-step, starting with real-world usage, followed by ecosystem development and platform integration.

01

## Initial Deployment

MEU is introduced in controlled environments through real-world transactions and early integrations.

02

## Scalable Expansion

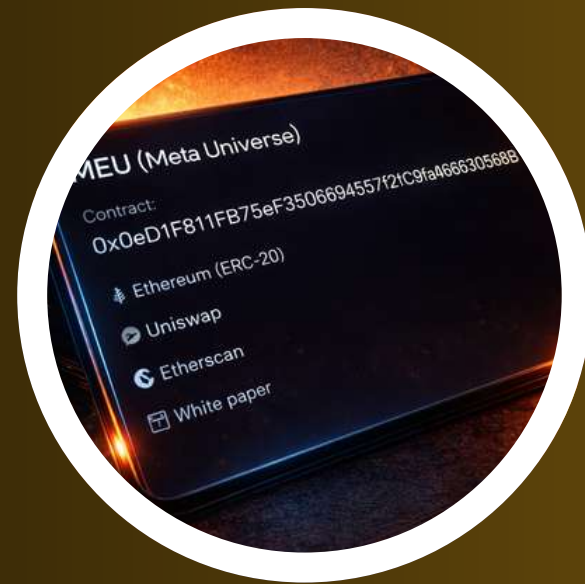
The ecosystem grows through user adoption, expanded utility, and future integration into gaming platforms.

# Project Structure



## Core Development

Led by core technical infrastructure and ongoing development.



## Ecosystem Growth

Focused on adoption, strategic partnerships, and real-world integration.



## Future Expansion

Open structure for developers, partners, and ecosystem contributors.



## Decentralized Vision

Designed to evolve into a scalable, decentralized, and collaborative ecosystem.

# Growth & Revenue Model

## Revenue Model & Growth Strategy

Meta Universe (MEU) is designed to power digital ecosystems that combine real-world payments, virtual environments, and scalable Web3 infrastructure.

The project begins with foundational utility and expands into integrated use cases, including gaming environments, digital economies, and platform-based interactions.

Growth is driven by real adoption, strategic integrations, and progressive ecosystem development.



[www.metauniversemeu.com](http://www.metauniversemeu.com)

# Meta Universe (MEU) Building the bridge between digital assets and real-world utility

Open to strategic partnerships and early contributors

[Etherscan \(Contract\):](#)

Email Address :

[info@metauniversemeu.com](mailto:info@metauniversemeu.com)

